

LIGHTING AND SIGNS

Exterior Lighting

Exterior lighting on the building and in parking lot areas must function correctly and be on while the business is open. The lights must stay on at least 1 hour after closing or the end of an event. This includes lighting in the rear of the building and rear parking lots.

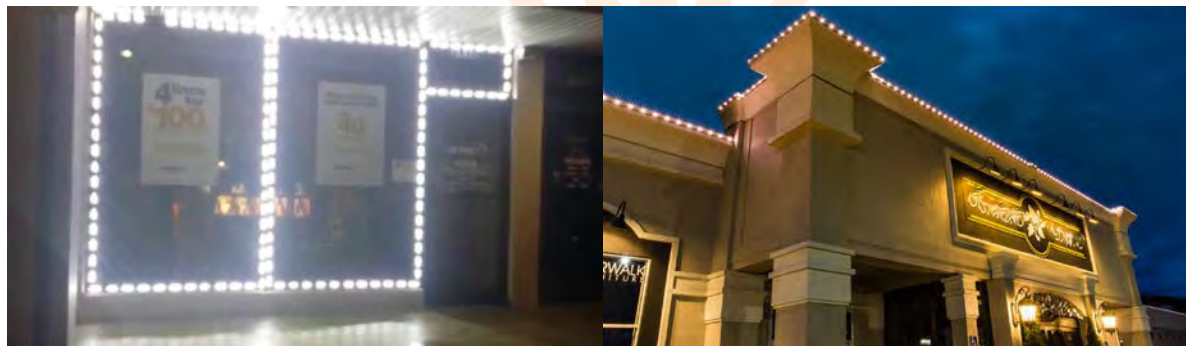
Window Signs

Signs in windows may not be illuminated in any manner. If you wish to have a lighted sign it must be located at least 15 feet from the window. It does not matter the content of the sign, if it is lit, it is not permitted. Below are examples of signs that are not allowed.



Attention Getting Devices

Use of lighting around windows or the exteriors of the building is prohibited. These lights are attention getting devices and must be removed. Below are some examples.



Sidewalk Signs

Each business may place 1 sidewalk sign meeting the criteria below.

Maximum number of Signs	1 per business
Maximum Width	3 ft
Maximum Height	3-1/2 ft
Minimum Distance from Curb	4 ft
Duration Allowed	Only during hours business is open
Allowed on Public Property and Right of Way	No, unless part of master parking
Allowed in Sight Visibility Triangle	No
Illumination Allowed	No

Windows Signs LDC 1804 | Attention Getting Devices LDC 1814(a)
Sidewalk Signs LDC 1806(b) | Exterior Lighting LDC 250144(d)