

**ACTION PICTURES  
UNDERGROUND**



12" water main break repair on Sample Rd.



Service line leak repair on Sample Rd.



New water service line installation

Installing a new Backflow Preventer Assembly for backflow protection



**TRAINING & STAFF DEVELOPMENT**

We provide Hands-On & Classroom Training that are beneficial to both the employees and the Utilities Division



**CAPITAL PROJECTS**

*Sample Rd. Water & Force Main Replacement*



*Raw Water Well Field Rehabilitation*



*Inflow & Infiltration Reduction*



*Lift Station Rehabilitation*



*For questions, or if you need further information, please contact the Utilities & Engineering Division at (954) 345 - 2160*



**UTILITIES & ENGINEERING  
DIVISION**



**WATER TREATMENT  
WATER DISTRIBUTION  
WASTEWATER COLLECTION  
ENGINEERING SERVICES**

**CITY OF CORAL SPRINGS  
PUBLIC WORKS  
UTILITIES & ENGINEERING DIVISION**

3800 NW 85TH AVENUE  
CORAL SPRINGS, FL 33065



## WATER DISTRIBUTION

### **Underground Repairs:**

Utilities Crews maintain 163 miles of water lines, 125 miles of sewer gravity lines and 31 miles of force main lines.



### **Fire Hydrants Maintenance & Installation:**

Utilities Crews maintain and operate 1,155 fire hydrants throughout the City



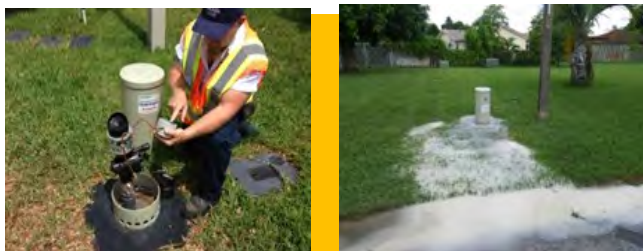
### **Water Valves Maintenance Program:**

Utilities Crews maintain and exercise 2,500 water isolation valves.



### **Dead Ends Automatic Flushers Installation:**

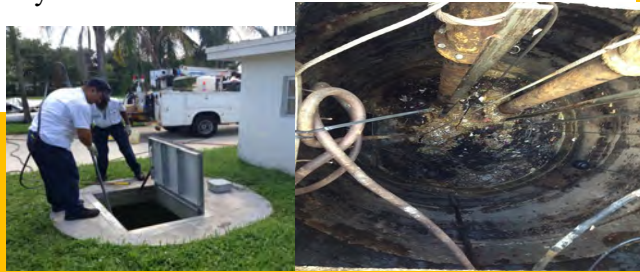
The Utilities Crews have installed 120 flushing devices throughout the City to improve the quality of the water.



## WASTEWATER COLLECTION

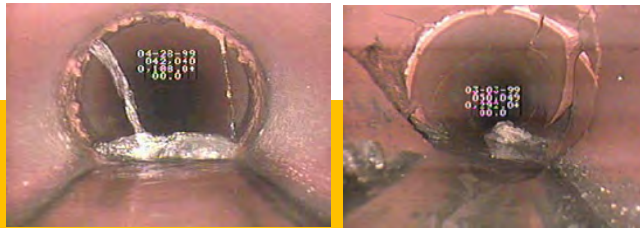
### **Lift Stations Maintenance Program:**

Utilities Division is responsible for the operations & maintenance of 53 lift stations located throughout the City



### **Sewer System TV Inspection & Cleaning:**

Utilities Crews perform TV Inspection and pipe cleaning in 125 miles of sewer gravity lines.



### **Lift Stations Portable Generators:**

Utilities Division is responsible for providing power with portable generators to our 53 lift stations sites during emergency events or power outages to prevent sewer spills



### **Lift Stations Wet Well Rehabilitation Program:**

Utilities Division is rehabilitating lift stations wet wells through the Inflow & Infiltration Reduction Program



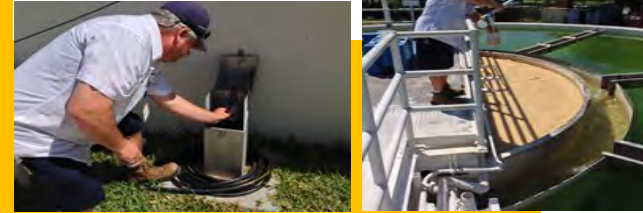
## WATER TREATMENT PLANT

### **Water Quality Monitoring:**

Water Plant Operators perform water testing on a daily basis to monitor water quality.



**Water Sampling:** Water Plant Operators collect approximately over 2,000 water samples per month to monitor the quality of water



### **Lime Sludge Removal:**

Water Plant produces approximately 6,000 cubic yards of lime sludge per year.



### **Preventive Maintenance Program:**

Water Plant Operators performs maintenance on Water Treatment Units. Also, Utilities Division is responsible for the maintenance of 18 Water Wells

